



# Effective DIY Trials

## Ben Raskin

### Head of Horticulture



**Soil Association**



A PARTNERSHIP PRESERVING OUR HERITAGE



## Dedicated Research Fund

- Small-scale seed funding
- Led by farmers
- Supports projects that:
  - ✓ *have a demonstrable* research impact
  - ✓ *translate into* on-farm practical advantage





## Field Labs

How they are different?

- 2 – 3 meetings over a season
- Trying a new approach on farm
- With a facilitator and researcher



# Key to establishment of farmer innovation groups

- Time required to generate interest
- Concept different from familiar technical events – more commitment / involvement
- Farmers must pose the questions – avoid preconceived ideas from researchers
- Engaging academics – improve the rigour as well as learn from farmers

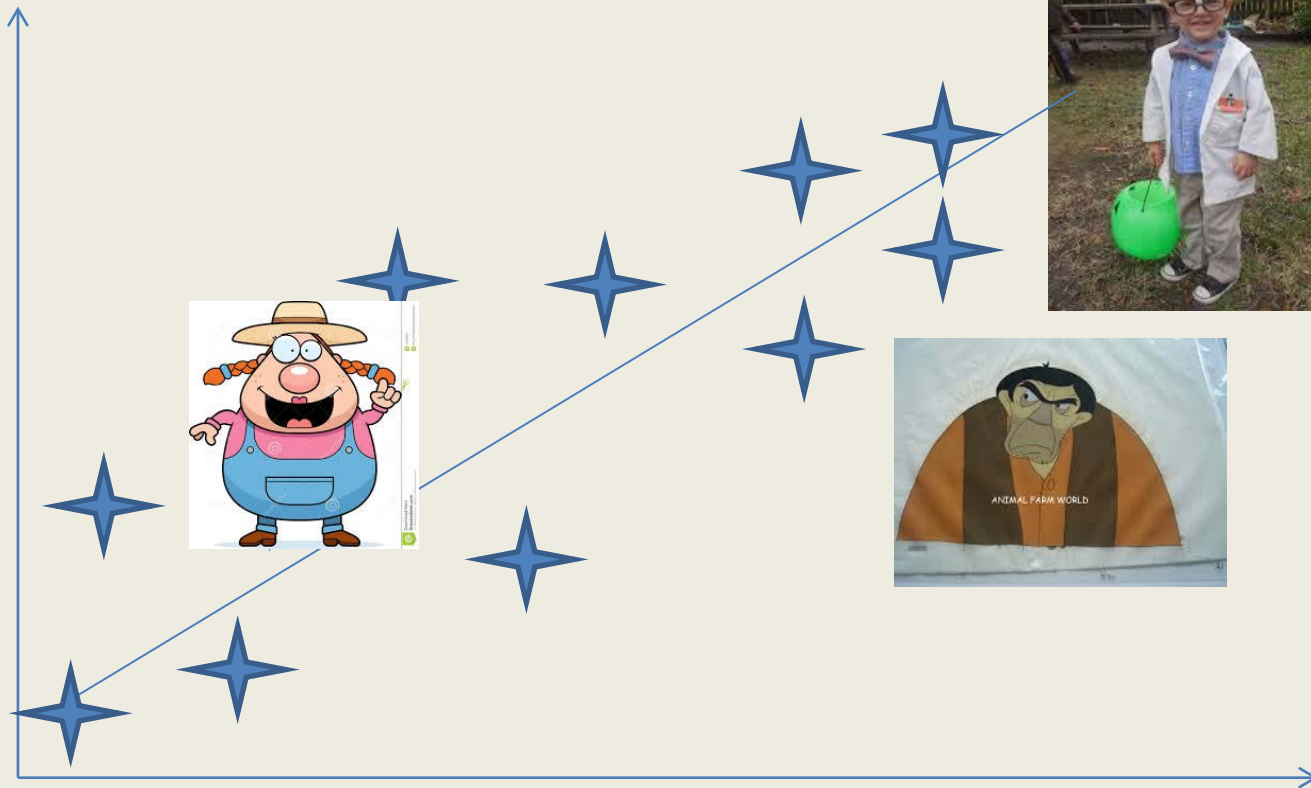


Peat-free compost field lab

## Simplicity vs robustness

Bomb  
proof

Flaky



Piece of  
cake

Bloody  
complicated

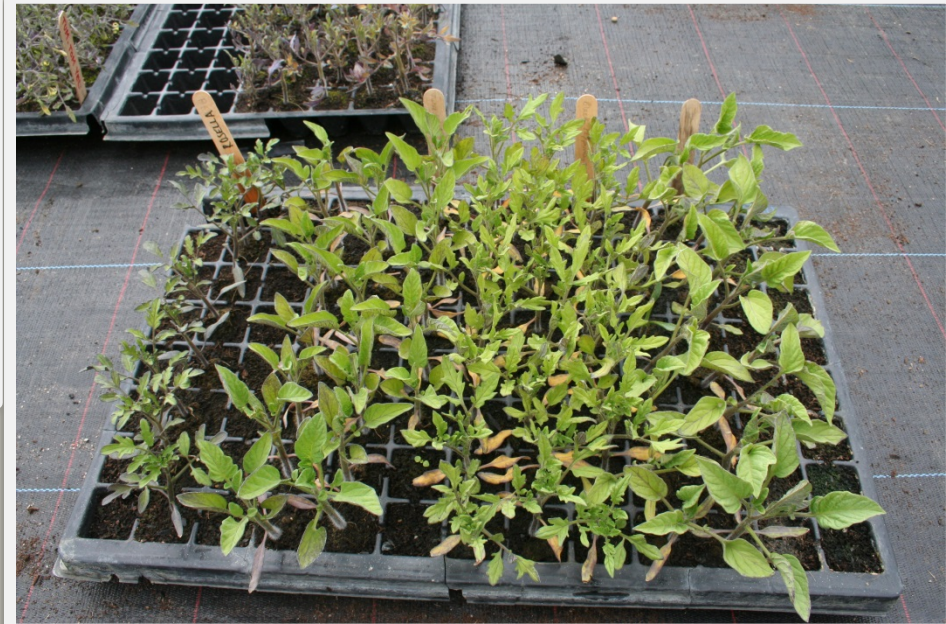




Using a camera



What information do you want to record?





# Thank you

