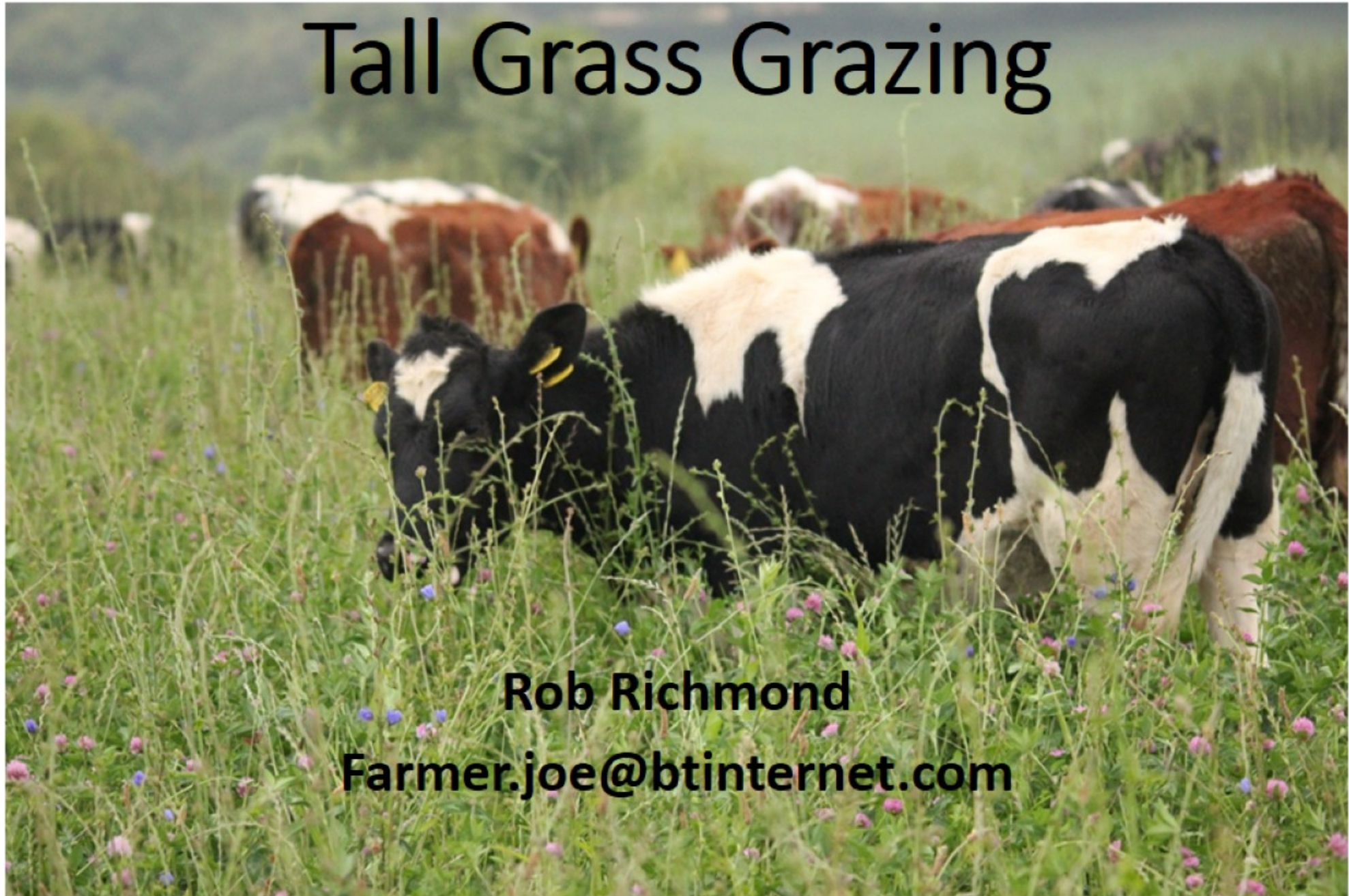


# Tall Grass Grazing

**Rob Richmond**

**[Farmer.joe@btinternet.com](mailto:Farmer.joe@btinternet.com)**



What is it that we are trying to do with pasture?

Putting it into practice.

A cow for the job

What is it that we are trying to do?

Growing grass to feed cows

OR

Harvest sunshine to grow grass

Growing grass

Need pH P + K + N/legume?

OR leaf area to capture sunlight?



3 Leaf ryegrass under constant growing conditions, each leaf appears in same time e.g. 1 week

1<sup>st</sup> Leaf 15% DM

2<sup>nd</sup> Leaf 25% DM

3<sup>rd</sup> Leaf 60% DM

3<sup>rd</sup> week growing 4X grass cf 1<sup>st</sup> Week

Photosynthesis absorbs energy from the sun.

It stores it in the C-H bond in glucose

Larger leaf area

- Captures more sunshine

- Produces more sugar

- Feeds the soil

# Build soil organic matter

- Build energy reserve of the soil

- more resilient/ productive soil.



# PUTTING IT INTO PRACTICE

-Diverse swards

-Grazing management

-Compost

# Grazing management

Dairy cows need quality diet

- graze just before/at flowering

- graze tidy but not too tight

- grass grows grass!























# Compost

- Adding organic matter to soil

- Adding microbes to soil

- Adding available nutrients

- Organic matter brought onto farm



# A cow for the system

- Medium size + deep bodied

- Eat then lie down and ruminate



